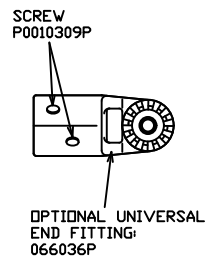
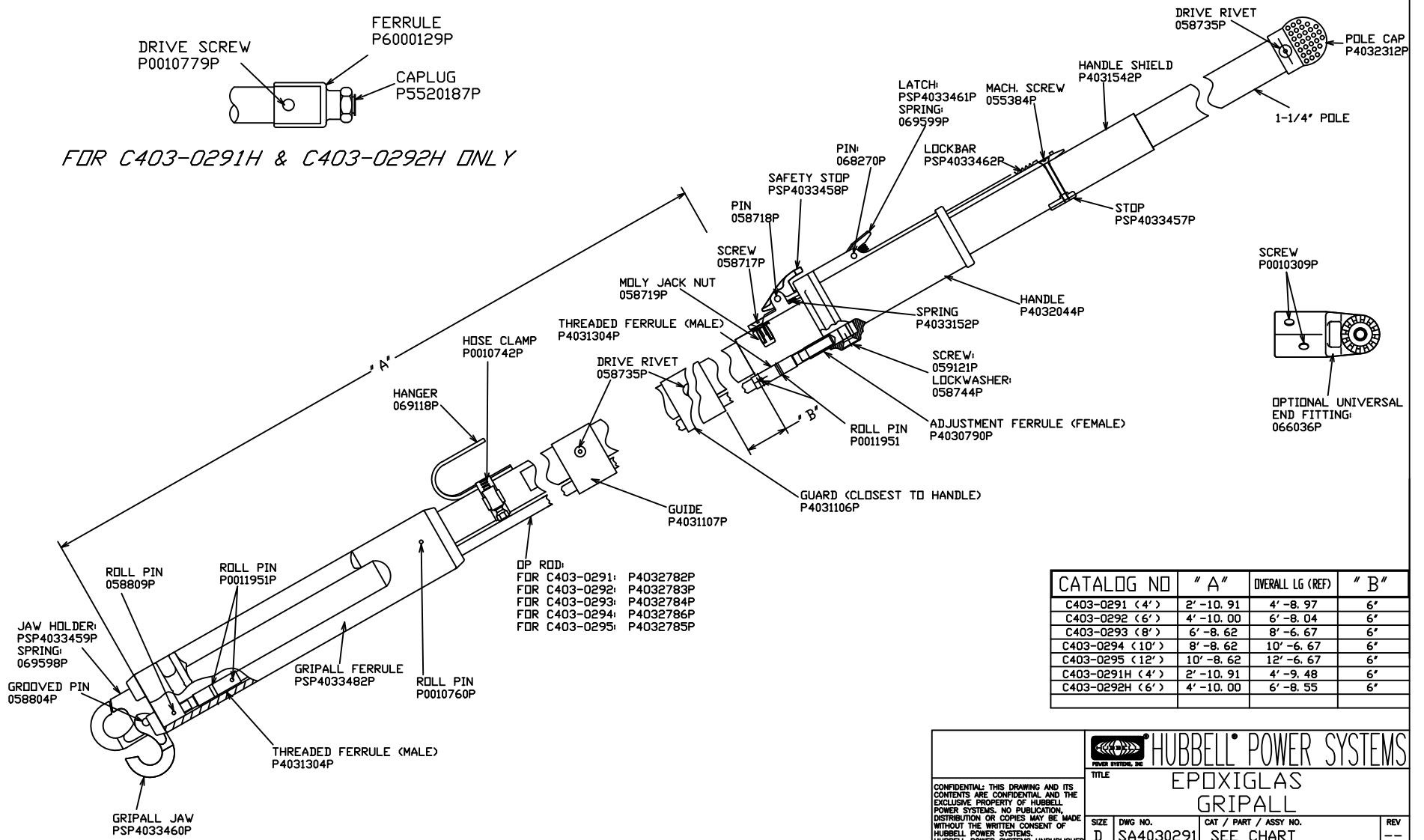


*FDR C403-0291H & C403-0292H ONLY*



DP ROD:

FDR C403-0291:	P4032782P
FDR C403-0292:	P4032783P
FDR C403-0293:	P4032784P
FDR C403-0294:	P4032786P
FDR C403-0295:	P4032785P

CATALOG NO	" A "	OVERALL LG (REF)	" B "
C403-0291 (4')	2'-10.91	4'-8.97	6'
C403-0292 (6')	4'-10.00	6'-8.04	6'
C403-0293 (8')	6'-8.62	8'-6.67	6'
C403-0294 (10')	8'-8.62	10'-6.67	6'
C403-0295 (12')	10'-8.62	12'-6.67	6'
C403-0291H (4')	2'-10.91	4'-9.48	6'
C403-0292H (6')	4'-10.00	6'-8.55	6'

		<b>HUBBELL POWER SYSTEMS</b>	
		<b>EPoxIGLAS GRIPALL</b>	
<small>CONFIDENTIAL: THIS DRAWING AND ITS CONTENTS ARE CONFIDENTIAL AND THE EXCLUSIVE PROPERTY OF HUBBELL POWER SYSTEMS. NO PUBLICATION, DISTRIBUTION OR COPIES MAY BE MADE WITHOUT THE WRITTEN CONSENT OF HUBBELL POWER SYSTEMS. HUBBELL POWER SYSTEMS UNPUBLISHED ALL RIGHTS RESERVED UNDER THE COPYRIGHT LAWS.</small>			
<small>DO NOT SCALE THIS DRAWING</small>	<small>DRN BY RAM</small>	<small>DATE 1/22/14</small>	<small>SHEET 1 OF 1</small>

CF THIS SYMBOL IDENTIFIES CRITICAL FEATURES